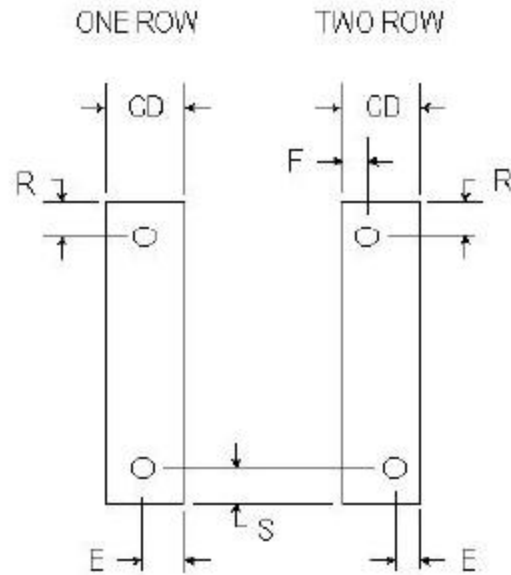
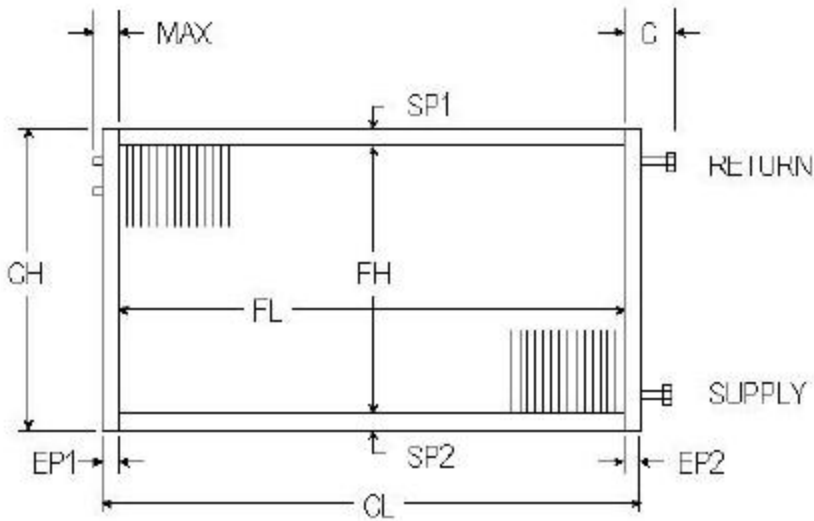
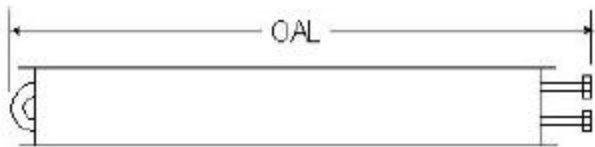


# BOOSTER COILS



ROWS AVAILABLE	1	2
FPI AVAILABLE	8	10 12
TUBES OD & Wall Thickness	5/8	.020
COPPER ONLY	1/2	.016
FINS Material & Thickness	ALUM.	.006 .010
	COPPER	.006
CASING	16 GA. GALV. STEEL 16 GA. STAINLESS STEEL	
MODEL NO. (Example)	W - Water 8 - 8 fpi 1 - 1 row 12 - Fin Height 24 - Fin Length N - Non Headered	

### DIMENSIONAL DATA IN INCHES

$$OAL = MAX + FL + C$$

### CONNECTION SIZES

3/4 MPT      1 MPT

ITEM	QTY	ROWS	FPI	SP1	FH	SP2	CH	EP1	FL	EP2	CL	CD	MAX	C	OAL	SUPPLY	RETURN	CU
				1		1		1		1		4	2 1/4	5				

P.O. #							CUSTOMER										
W.O. #							MODEL NO.										
APPROVED BY							TAG:										
DATE							NOTES										

JFD Tube & Coil Products, Inc.  
 PO Box 6309 / 7 Hamden Park Dr  
 Hamden, CT 06517  
 Ph: (800) 824-2664 Fx: (203) 281-7368  
 Visit Our Website: [www.jfdcoil.com](http://www.jfdcoil.com)

Performance Data	CFM		EDB/EWB		LDB/LWB		CAPACITY		EWT		LWT		GPM	
------------------	-----	--	---------	--	---------	--	----------	--	-----	--	-----	--	-----	--



**Basic Measuring Guidelines**

**Rows**

- Horizontal rows of tubes in the fin pack

**FPI - Fins Per Inch**

**FH - Fin Height**

**FL - Fin Length**

**SP1, SP2 - Sideplate Flanges**

- Called sideplates because coil face lays flat on the table during tube expansion

**EP1, EP2 - Endplate Flanges**

- Also called tube sheets

**CH - Casing Height**

$CH = SP1 + FH + SP2$

**CL - Casing Length**

$CL = EP1 + FL + EP2$

**CD = Casing Depth**

- CD must be greater than (# Rows) \* (Centerline Distance Between Rows)

**Max**

- Dimension from the edge of the fin pack to the outside of the return bend

**L - Connection Length**

**"C" Dimension**

- Dimension from the edge of the fin pack to the outside of the header

**OAL - Overall length**

- Dimension from the edge of the return bends to the outside of the header

$OAL = MAX + FL + C$

**S, R, E, F - Connection Locations**

- Measured from the sides of the casing to the centerline of the connection